

# 2023 IN REVIEW

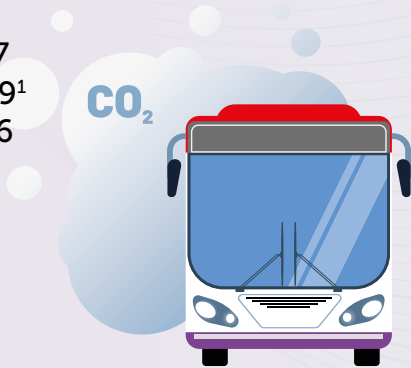
## GREENHOUSE GAS EMISSIONS (tCO<sub>2</sub>e)

2023: 758,051  
2022: 780,942<sup>1</sup>  
2021: 792,483



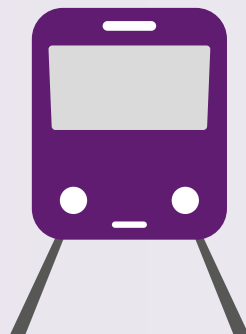
## SCOPE 1 & 2 FLEET EMISSIONS (tCO<sub>2</sub>e)

2023: 451,017  
2022: 439,029<sup>1</sup>  
2021: 595,696



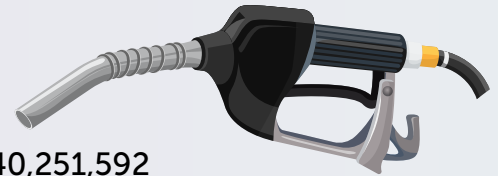
## GREENHOUSE GAS INTENSITY (tCO<sub>2</sub>e/S\$m)

2023: 496.4  
2022: 515.4<sup>1</sup>  
2021: 604.6



## FUEL CONSUMPTION (L)

2023: 140,251,592  
2022: 134,131,446  
2021: 133,538,848



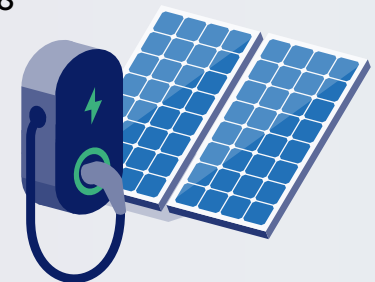
## ELECTRICITY PURCHASED FROM THE GRID (kWh)

2023: 407,775,255  
2022: 408,298,271  
2021: 420,974,535



## RENEWABLE ELECTRICITY GENERATED (kWh)

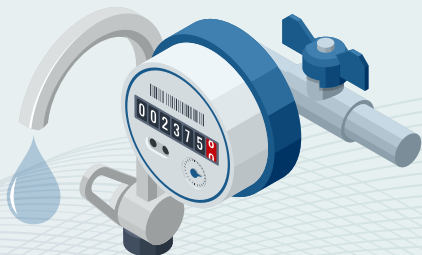
2023: 4,322,577  
2022: 4,319,802  
2021: 2,393,358



<sup>1</sup> Due to improvements in data collection and calculation, our Greenhouse Gas (GHG) emissions and fleet emissions have been restated, which resulted in an increase by 2% and 5% respectively compared to levels previously reported.

## WATER CONSUMPTION (megalitres)

2023: 1,014  
2022: 1,014  
2021: 1,028



## ROAD SAFETY



	2021	2022	2023
Number of accidents per 100,000km	0.1	0.1	0.1
Road fatalities	2	3	3

## BUS FLEET

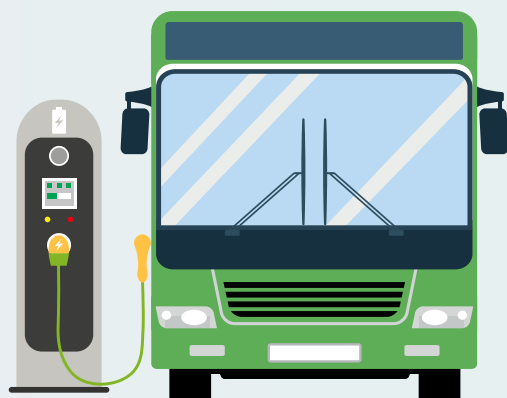
2023: 3,572  
2022: 3,562  
2021: 3,548



2,515

## DIESEL HYBRID/ ELECTRIC BUSES

2023: 57  
2022: 56  
2021: 55



## WORKPLACE SAFETY

Workplace injury rate per 100,000 employed persons

	2021	2022	2023
Bus	420.9	245.3	188.0
Rail	160.0	191.8	181.3

## WHEELCHAIR ACCESSIBLE BUSES

100%



## FEMALE EMPLOYEES

2023: 9.3%  
2022: 9.5%  
2021: 9.6%



## EMPLOYEE AGE > 50 YEARS OLD

2023: 40.6%  
2022: 38.0%  
2021: 41.5%

## DONATIONS

2023: \$743,547  
2022: \$565,600  
2021: \$597,000

